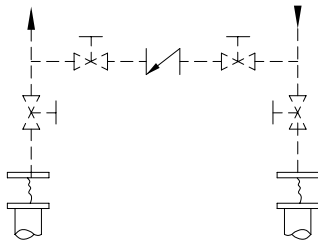
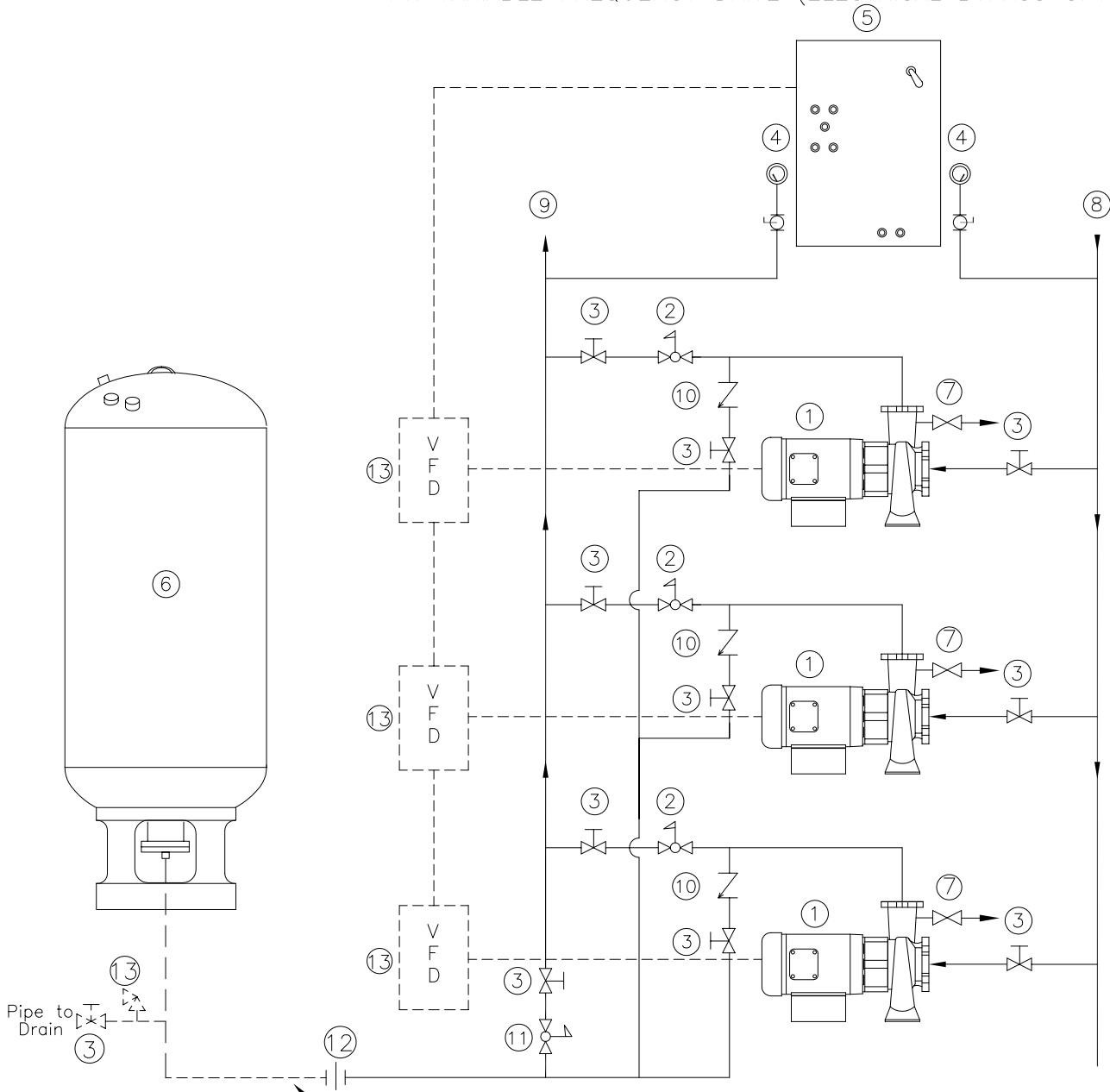


# PIPING SCHEMATIC



RECOMMENDED FIELD INSTALLED SYSTEM CONNECTORS, ISOLATION VALVES AND OPTIONAL BY-PASS

1. PUMP AND MOTOR
2. PILOT OPERATED PRV AND CHECK VALVE
3. ISOLATION VALVES
4. PRESSURE GAUGES (MOUNTED ON CONTROL PANEL)
5. CONTROL PANEL
6. HYDRO-PNEUMATIC TANK
- \* 7. THERMAL PURGE VALVES
8. SUCTION MANIFOLD
9. DISCHARGE MANIFOLD
10. CHECK VALVE
11. PRESSURE REDUCING VALVE
12. COUPLING
13. PRESSURE RELIEF VALVE (BY OTHERS IF REQUIRED)
14. VARIABLE FREQUENCY DRIVE (ELECTRICAL BYPASS OPTIONAL)



Field Piping & Valves by Others with Adjacent Tank

\* REFER TO PAGES 6.40 & 6.41 FOR DETAILS.

TRIPLEX VARIABLE SPEED WITH PRV'S

AND ADJACENT OR SKID MOUNTED TANK

CANARIIS CORPORATION

DATE: 02/14/06

SCALE: NTS

www.canariis.com