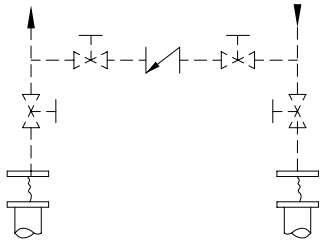
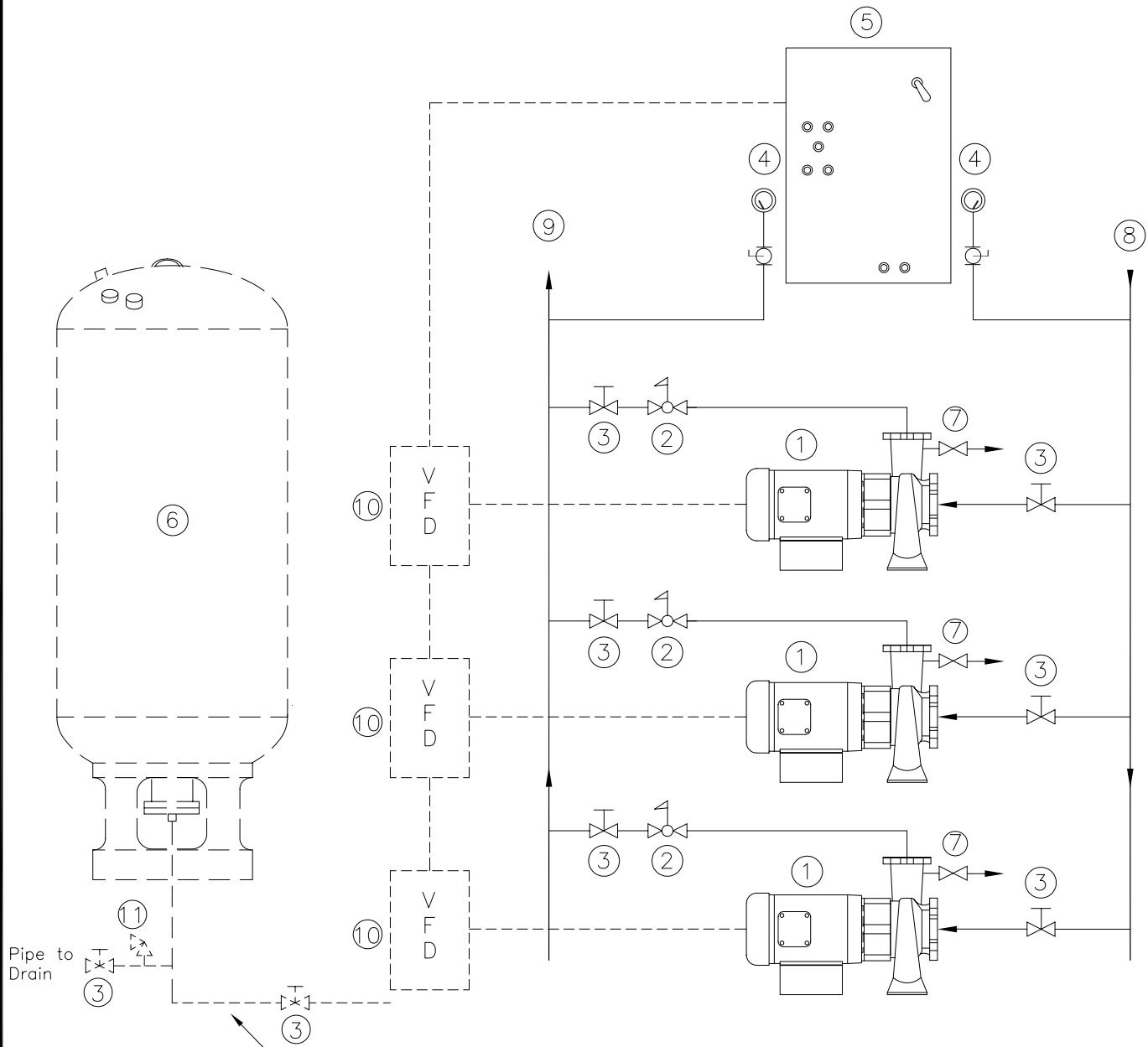


PIPING SCHEMATIC



RECOMMENDED FIELD INSTALLED SYSTEM CONNECTORS, ISOLATION VALVES AND OPTIONAL BY-PASS

1. PUMP AND MOTOR
2. PILOT OPERATED PRV AND CHECK VALVE
3. ISOLATION VALVES
4. PRESSURE GAUGES (MOUNTED ON CONTROL PANEL)
5. CONTROL PANEL
6. REMOTE HYDRO-PNEUMATIC TANK (OPTIONAL)
- *7. THERMAL PURGE VALVES
8. SUCTION MANIFOLD
9. DISCHARGE MANIFOLD
10. VARIABLE FREQUENCY DRIVE (ELECTRICAL BYPASS OPTIONAL)
11. PRESSURE RELIEF VALVE (BY OTHERS IF REQUIRED)



Field Piping & Valves by Others

* REFER TO PAGES 6.40 & 6.41 FOR DETAILS.

TRIPLEX VARIABLE SPEED WITH PRV'S REMOTE TANK OPTIONAL	CANARIIS CORPORATION DATE: 02/14/06 SCALE: NTS www.canariis.com
---	---